

The Autumn Night Sky

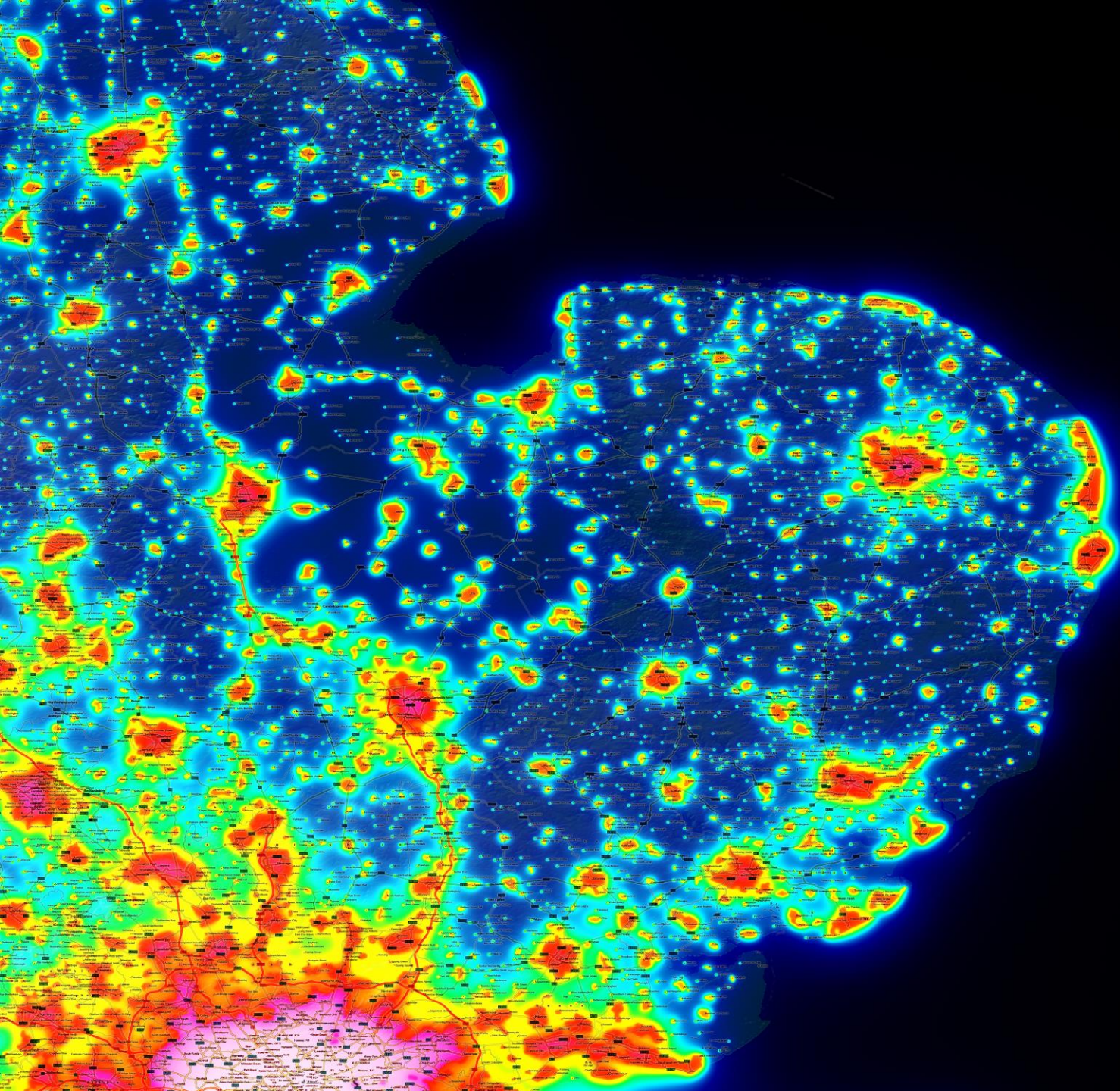
A Journey with Paul Webb



Light Pollution

We are well placed to enjoy some of the darkest skies in the UK.

To get the best views observe after astronomical twilight when the sun is more than 18 degrees below the horizon.

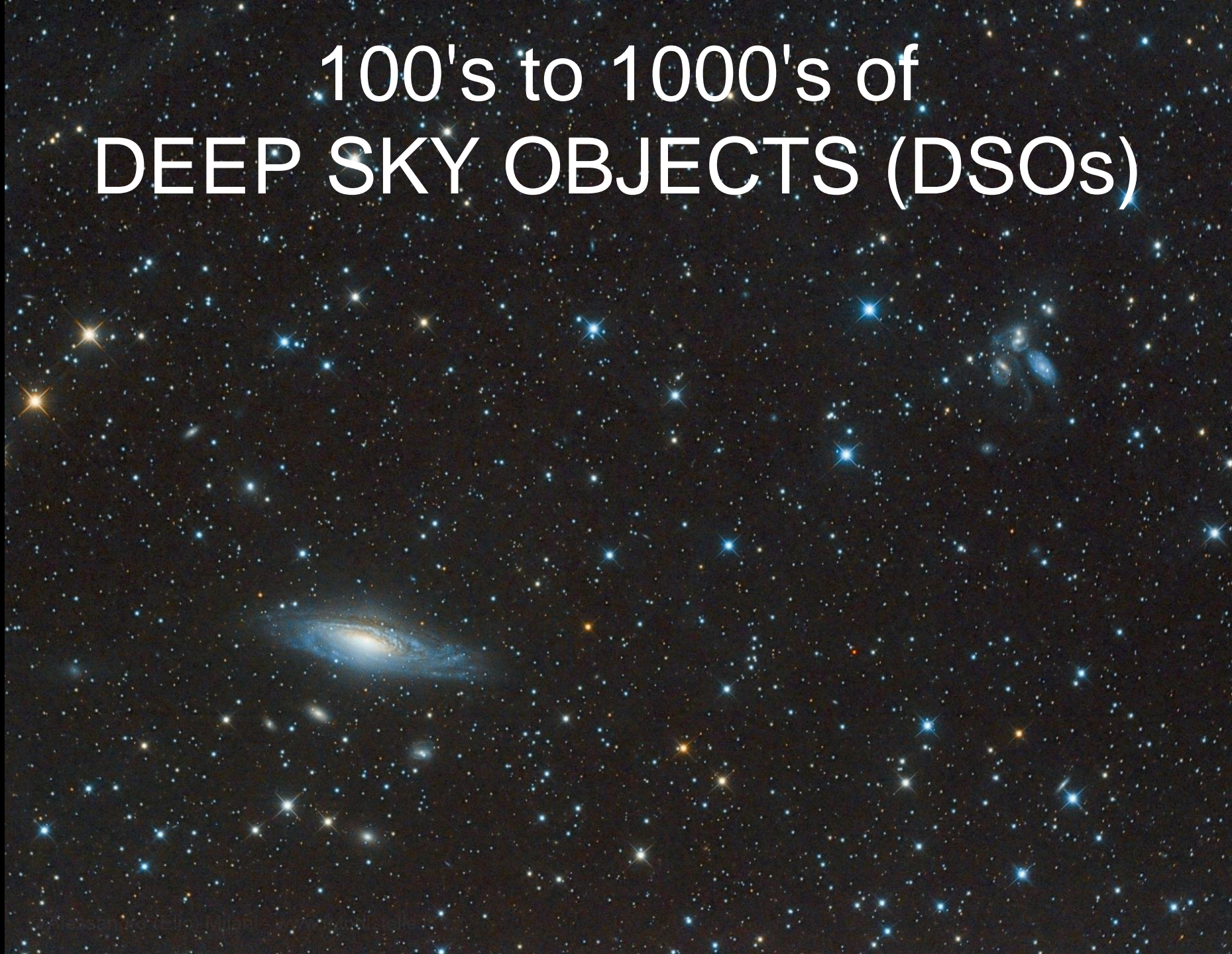


The next new Moon is
13 September
& astro dark begins at
9.17pm to 4.26am

So what is there to see other
than stars.

Even with binoculars or a
modest sized scope we can see
200,000 to 15 million stars
&

100's to 1000's of
DEEP SKY OBJECTS (DSOs)



Those DSOs include
Open & globular clusters
Nebulae
Galaxies

Closer to home we have double
& multiple stars.
The planets & the Moon.

Starting in the West

Arcturus in Bootes is now setting but still
time to look at double star Izar 2.5/4.8 sep 3"
M13 & M92 GC still fairly high 6207 galaxy
(mag 11.6) close to M13 for larger scopes 8"
Rasalgethi nice double 3.4/5.4 sep 5" you
might see green!
M12, 10 & 14 GC in ophiucus past thier best
M11 wild duck cluster is superb
Lower you might still see the swan neb M17

Moving to the South

Almost overhead is Deneb mag 1.3 the tail of Cygnus
Around Sadr is NGC 6910 rocking horse cluster & M29 cooling
tower

Crescent neb is difficult to see. Moving to star 52 is the
magnificent veil neb a UHC or OIII filter helps even in 4" scope
The head of Cygnus is double Albireo Gold & vivid blue 3/4.7
sep 35"

In Lyra is M57 & higher is epsilon Lyra an interesting double
over to the left is M56 GC

Vulpecular & Sagitta shows the dumbbell M27 & the cluster M71
Collinder 399 Coathanger

At the other end of sag is blue flash neb 6905

Gamma delpinus is a nice double 4.3/5 sep 9" Then over to M2
in Aqr & M15 in Peg

Now to the East

NGC 7331 & Stephan's quintet up on the right of the square

7662 blue snowball is easy to find but low down M74 in pisces is hard

In Tri is M33 & NGC 604 then up to Mirach's ghost 404 Andromeda galaxy M31 plus 32 & harder 110

Almach is a better double than Albireo much tighter 2.2/5 sep 10" nearby is ngc 891 an edge on galaxy. Up to Little dumbbell M76 it's tiny. Then on to the double cluster wow! In Cas we have lots of clusters most stunning is Carolines rose 7789 & M52. NGC 40 is a bright PN near there in Cepheus. Garnet star is striking.

Finally the North

In Camelopardalis is Kembles cascade wide field is best terminating with NGC 1502. High up in Draco is Cat's eye 6543.

A bit low is M81 & 82 nearby are several other galaxies

M108 & 97 worth trying along with M109 & M101.

Double surprise is Mizar & Alchor. Moving left is M51 & 63

Finally my thanks to